

**KATANGA**

# PROVINCE du KATANGA



ALBERTVILLE

ANKORO

BAUDOINVILLE

BAYA



BENDERA

BUKAMA  
(SANKISHIA)

DILOLO

ELISABETHVILLE



ÉTOILD du  
CONGO

JADOTVILLE

KABALLA  
MALEMBA NKULU

KABALO

# PROVINCE du KATANGA

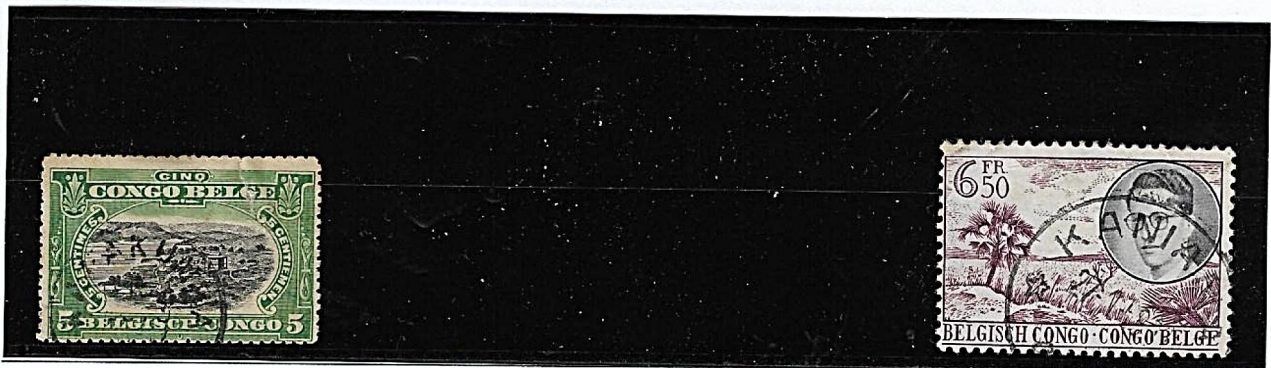


KABONGO

KAKUMBA  
(SAN DOA)

KALONGA

KAMBOVE



KAMINA

KAMUKISI

KAMUPINI

KANIAMA



KAPANGA

KASAJI

KASENGA

KATENGA

# PROVINCE du KATANGA



KIAMBI

KIKONDJA  
(KABALLA  
MALEMBA  
NKULU)

KILWA

KINDA



KIPAÏLA

KIPUSHI

KISENGE

KOLWEZI



KONGOLO

LIKASI

LUBUDI

LUENA

# PROVINCE du KATANGA

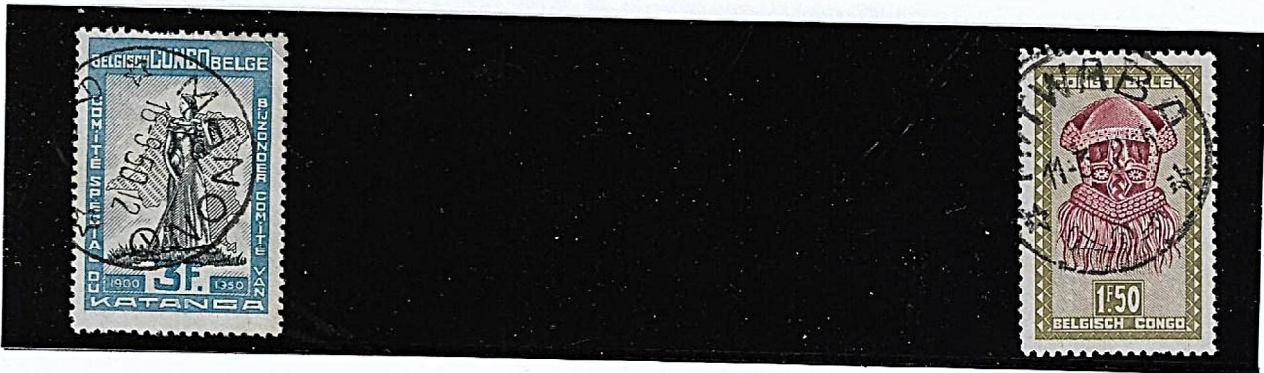


**LUISHIA**

**LUKAFU**

**MAKEMBA NKULU**

**MALONGA**



**MANONO**

**M'BAYA**

**MIKOLA**

**MITRWABA**



**MOBA  
(BAUDOINVILLE)**

**MOKAMBO**

**M'TOA**

**MUSONIE**

# PROVINCE du KATANGA



MUTSHATSHA

MUYUMBA  
(MANONO)

MWADINGUSHA

N'GULE



NIEMBA

NYUNZU

PANIA MUTOMBO

PWETO



SAKANIA

SAMPWE

SANDOA

SANKISHIA

# PROVINCE du KATANGA



SHINKOLOBWE

TENKE

TOA

MUSOFI



## KATANGA SPECIAL COMMITTEE