

**L'EQUATEUR**



# PROVINCE du L'EQUATEUR



**BANZVILLEN**

**BASANKUSU**

**BEFALE**

**BIKORO**



**BINGA**

**BOENDE**

**BOKOTE**

**BOKUNGU**



**BOLOMBA**

**BOMBOMA**

**BOMONGO**

**BONGANDAGA**



# PROVINCE du L'EQUATEUR



**BOSOBLO**

**BOZENE**

**BUDJALA**

**BUMBA ITIMBIRI**



**BUSINGA**

**BUSU-DJANOA**

**BUSU-SIMBA**

**COQUILHATVILLE**



**DJOLU**

**DONGO**

**GEMENA**

**GUMBA  
(MONGALA)**



# PROVINCE du L'EQUATEUR



**GUMBA-MOBEKA**

**IKELA**

**INGENDE**

**IREBU  
(GOMBE)**



**ITIMBIRI**

**KARAWA**

**KUMA  
(MONGALA)**

**KUNGU**



**LIBENGE**

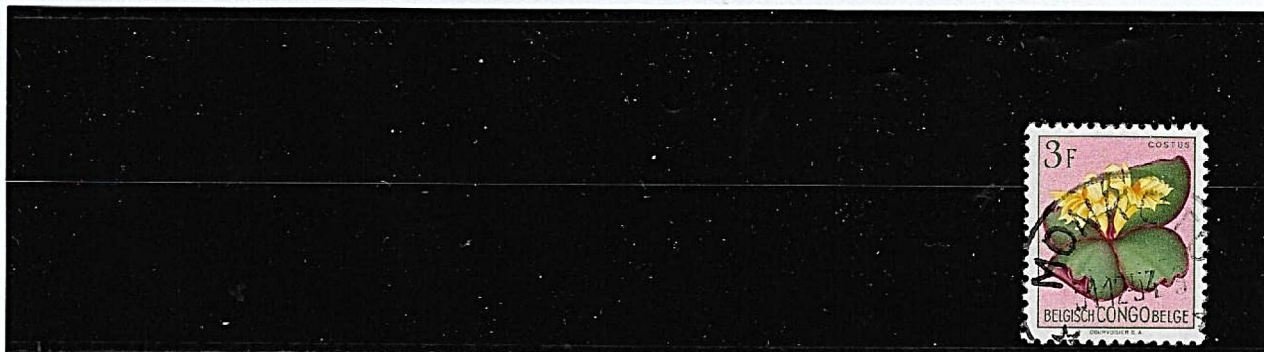
**LISALA**

**LOKOLIA**

**LUKOLELA**



# PROVINCE du L'EQUATEUR



LULONGA

MOMPONO

MONDOMBE

MONKOTO

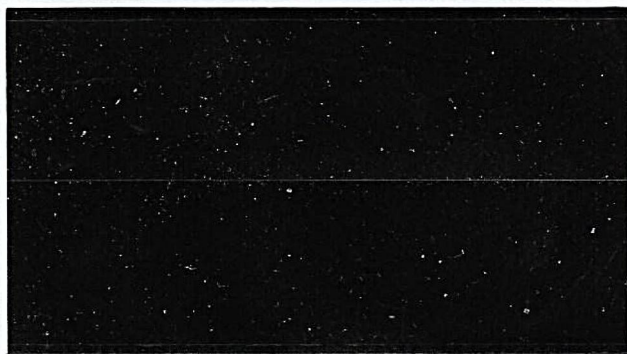


MONVEDA

MOTENGE-BOMA

NOUVELLE  
ANVERS

UMANGA  
(LISALA)



YAKOMA

ZONGO  
(UBANGI)

GOMBE